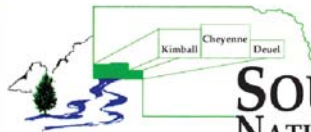


KNOW YOUR NRD

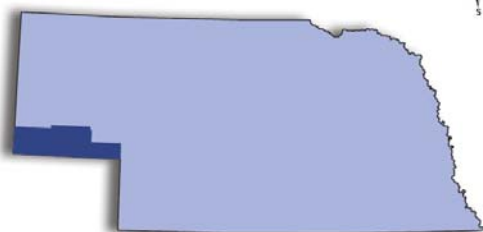


SOUTH PLATTE
NATURAL RESOURCES DISTRICT

Nebraska's Natural Resources Districts
Making the Good Life Better Since 1972

Fall 2016

SOUTH PLATTE NRD



Protecting Lives, Property and the Future of Natural Resources in the Southern Panhandle

Did you know?

The District has a wide variety of provisions, programs and practices it uses to protect ground water for use both today and into the future.

Following the state's primary ground water law, LB962, the District has developed its District-wide Ground Water Management Area Rules and Regulations, and also established, in conjunction with the state, an Integrated Management Plan to meet management objectives.

There are provisions for oversight and management options to help assure needs for sustainability and economic viability are met.

Protecting Lives

Wellhead Protection Planning

As part of work under a Section 319 water quality grant, the SPNRD has been working with local communities to establish Wellhead Protection Area Plans.

The goal of a Wellhead Protection Area Plan is to prevent ground water pollution in and around municipal wells which would make them unusable.

A Wellhead Protection Area is an area defined by NDEQ that is vital to protect active municipal wells.

The grant was completed at the end of June of 2015 and in total for the three counties that make up the South Platte NRD, 8 of the 10 municipalities took advantage of the 319 water quality grant.

Protecting Property

Project Protects Development

The SPNRD and the City of Sidney have teamed up to form a plan to protect properties at the lower end of the east Sidney drainage.

Running from the east Sidney interchange northwest toward town, the drainage funnels rain over several hundred acres toward homes and businesses from east of the WNCC college campus to neighborhoods to the west.

Officials have been working with engineers on possible ways to catch, slow or divert flows.

These efforts will reducing potential silt and contaminants from reaching Lodgepole Creek, and help prevent damage from runoff resulting from torrential rains.

Protecting The Future

Youth Education

The District provides scholarships to many educational programs, and hosts others without cost to attendees.

For instance, each spring fourth grade students learn about ground water at the Western Nebraska Children's Groundwater Festival.

Middle School students can attend the Adventure Camp About the Environment, where they'll roll up their sleeves and learn about soils, water, careers and more.

The NRD also assists high school students, who can attend Range Camp, or participate in range and land judging activities.

Contact us for details!

About the South Platte NRD

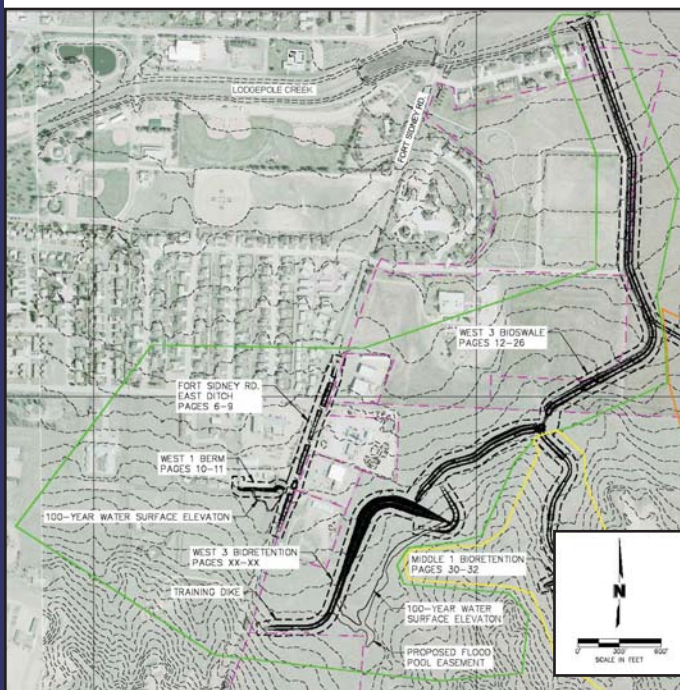
Oliver Reservoir Recreation Area Enhancement

The District, along with Olsson Associates of Lincoln, Nebraska, are working to enhance recreation and other opportunities at Oliver Reservoir Recreation Area while fulfilling the integrated management plan (IMP) developed in response to the groundwater Management and Protection Act (GWMPA) and Platte River Recovery Implementation Plan (PRRIP).

The Lodgepole Creek subbasin, a part of the South Platte river Basin, falls under the PRRIP. It is designated as overappropriated by the Department of Natural Resources (DNR).

The Platte Basin Coalition (PBC), consisting of the five Nebraska NRD's in the PRRIP area and DNR, was formed to undertake project to address IMP requirements for the Districts.

Joint East Sidney Watershed Authority



The Joint East Sidney Watershed Authority, or JESWA, was formed in cooperation with the City of Sidney to help mitigate water damage from large storm events that can cause flooding along and east of Ft. Sidney Road. The map shows current planned construction of berms and bio-swales to help direct and slow down potential damaging flood waters.

Nebraska Environmental Trust Grant

The District received a \$200,000.00 grant from the Nebraska Environmental Trust for the "Hydrogeology of Western Nebraska" project. The project digitally scans and processes existing oil and gas well geophysical logs to gather information about the aquifer. There is an estimated 2,300 wells that have geologic and hydrogeologic data that is readily available to provide for a greater understanding of the aquifer configuration within the project area.

Once scanned the logs will be incorporated into the Western Water Use Management Model and the COHYST model.



Protecting Lives, Protecting Property, Protecting the Future

Nebraska's NRDs:

In 1972 the Nebraska Legislature enacted laws to combine 154 special purpose entities into 23 NRDs. Unique to Nebraska, the districts are local government entities with responsibility to protect natural resources. Major Nebraska river basins form the boundaries, enabling districts to respond best to local needs.

Some NRD responsibilities:

- erosion prevention and control
- prevention of damages from flood water and sediment
- flood prevention and control
- soil conservation
- development, management, utilization, and conservation of groundwater and surface water
- drainage improvement and channel rectification
- development and management of fish and wildlife habitat
- development and management of recreational & park facilities
- forestry and range management

Learn more at www.nrdnet.org

The South Platte NRD

Seven locally elected directors govern southern Panhandle Natural Resources on your behalf. Their actions help ensure public safety, a strong local economy and a bright outlook for future generations.

Our Directors

Subdistrict:

1. Bill Halligan
2. James C. Johnson
3. Timothy R. Maas
4. Phil Grabowski
5. Keith Rexroth
6. Kathryn E. (Kathy) Narjes
7. Larry L. Rutt